



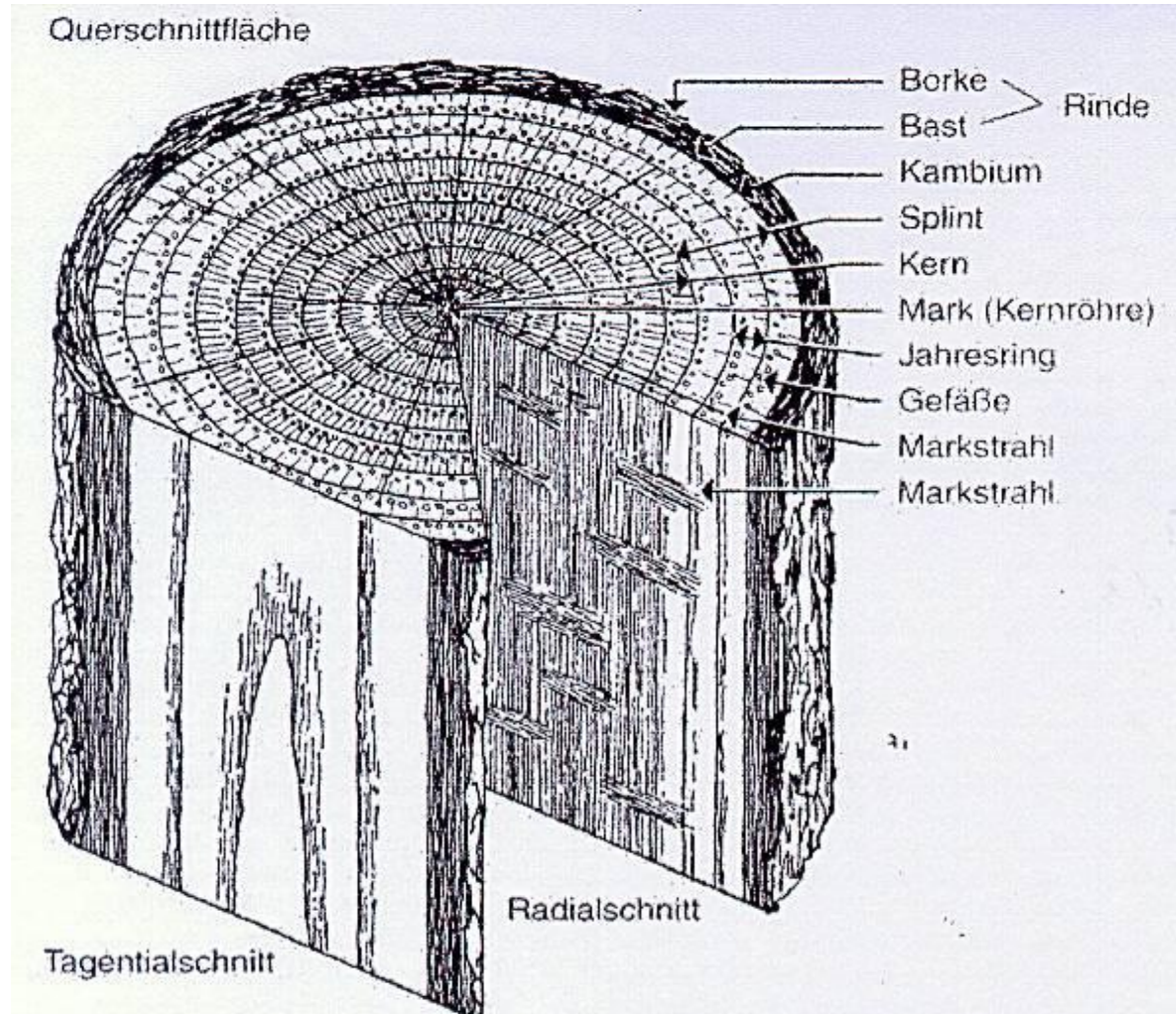
# **COST FP 1006 WG1 Meeting**

## **Wood surface modification and functionalization**

Gerhard Gröll (Holzforschung Austria , AT)  
Holger Miltz (University of Göttingen, DE)



# Scope of WG1



# Scope of WG1

- new treatments to bring enhanced or new functionality on wood surfaces
- micro-mechanisms of surface modification
- understanding of material s behaviour for explaining the mode and mechanisms of action
- collect user needs and preferences
- development of new surface modification processes
- investigate possibilities of eco-friendly treatments

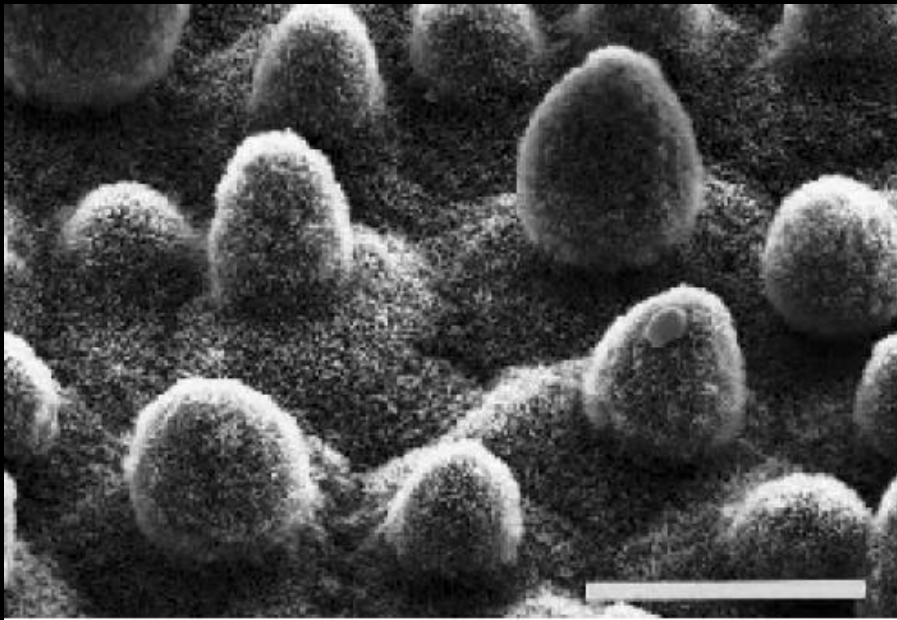
Leaf of the lotus flower



Planed larch wood

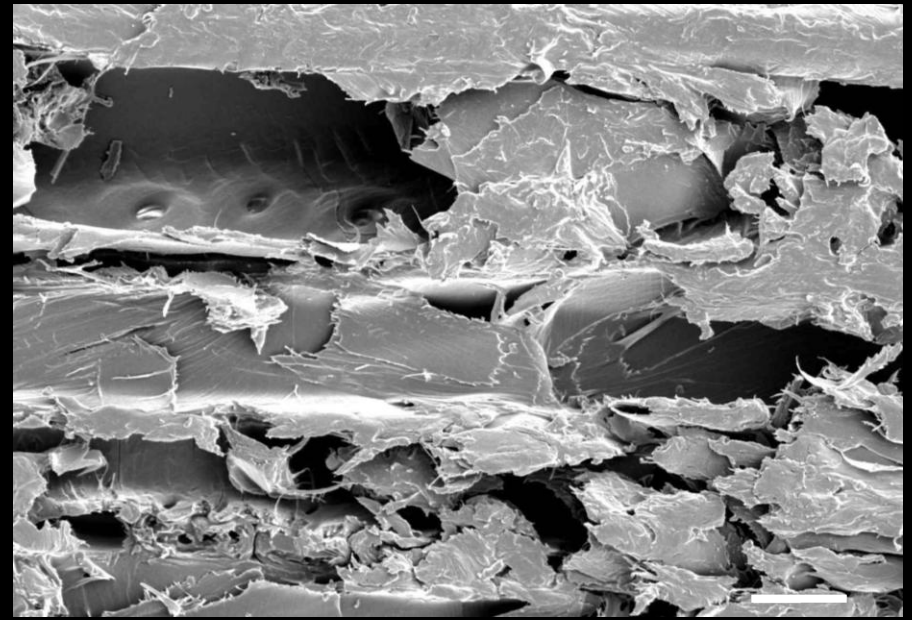


Leaf of the lotus flower



Bartholott und Neinhuis (1997)

Planed larch wood





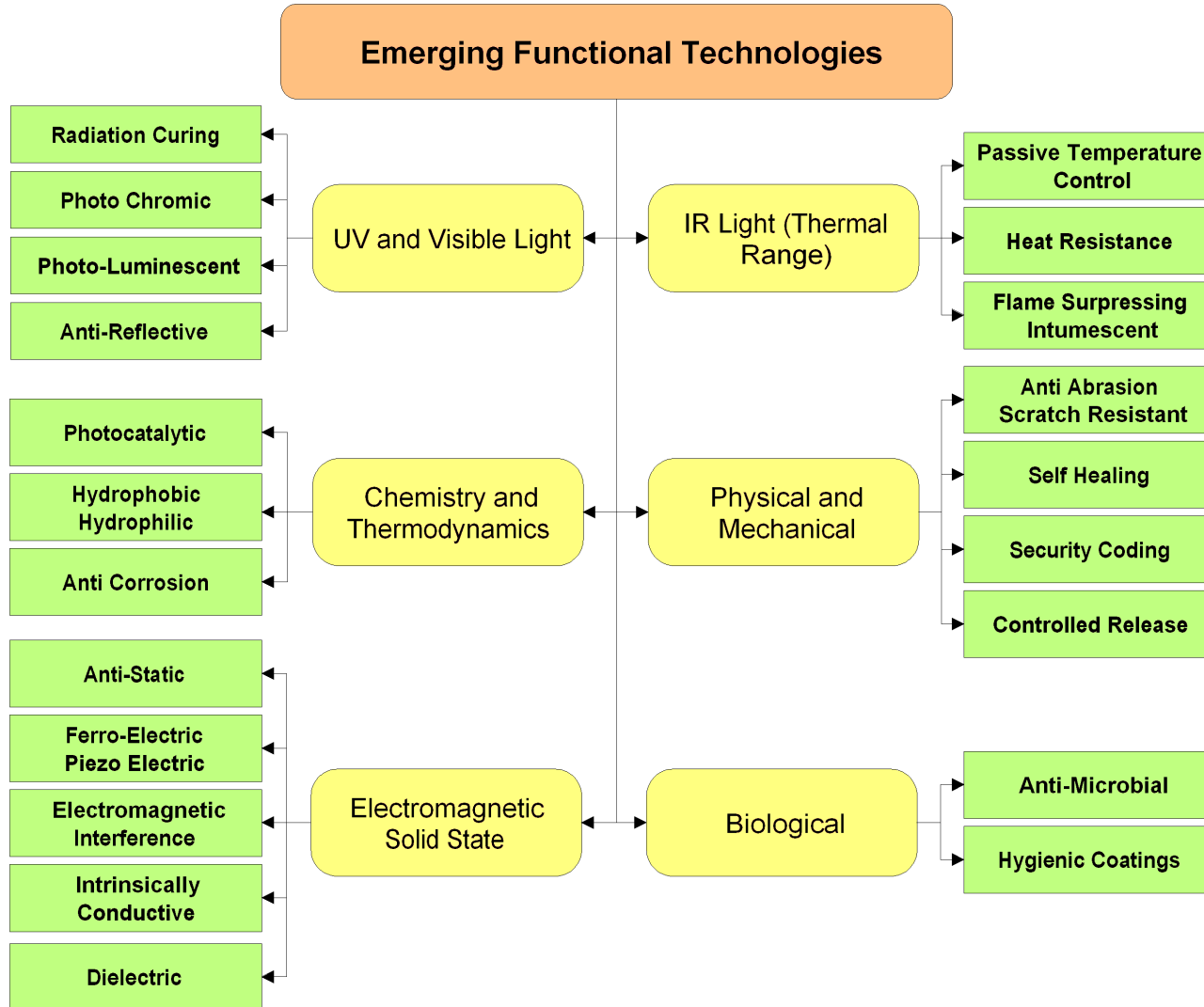
# Agenda

- Short introduction of members (max. 30 seconds each)
  - Member infos
  - Information on running projects
- Definition of research gaps in the field of wood surface modification
- 5 questions to architects, building planners, customers, industry, research contacts etc.
- Ideas for joint projects and suitable research calls
- Joint publications (STSMs, projects...)

# Represented Countries

- Austria
- Belgium
- Croatia
- Denmark
- Finland
- France
- Germany
- Greece
- Hungary
- Italy
- Latvia
- The Netherlands
- Norway
- Poland
- Portugal
- Romania
- Slovenia
- Sweden
- Switzerland
- Ukraine

# Reserach Gaps





# Research Gaps

- UV-protection without pigments and film forming coatings
- resistance to discolouring fungi based on low toxic or „non harmful“ systems (standard systems on novel substrates)
- environmental and health aspects of nano technology (cross domain activities!!)
- processes and their feasibility (get fundamental research to application)
- ways to fulfill European regulations (biocides, VOC etc.) (develop complete coating systems, reduce the need for biocides)

## 5 Questions

- Where we should drive our research in the future?
- What are the most important research areas?
- etc.
  
- Target group:
  - architects and building planners
  - industry
  - researchers
  - customers
  - ....

## 5 Questions

- What would make you use more wood surfaces?
- In which applications would you not use wood?
  - exterior, joinery, flooring/tiles(wet room flooring), furniture, walls, ceiling, other .....
  - why?.....
- What do you consider as the main disadvantages of wood surfaces?
- Which properties of wood surfaces are required for your applications?
  - hydrophobic, hydrophilic, antistatic, scratch resistant, stable in colour, other.....

# 5 Questions

- Which kind of wood failure have you experienced?
  - cracking, fungi, fire, swelling, deformations, low resistance, coating degradation, greying, other.....
- Which wood species are you interested in?
  - Softwoods, European hardwoods, tropical hardwoods, wood composites (Plywood, Particle Board).....
  
- General questions to identify the type of person answering (architect, R&D, wood industry, customer...)

# Joint Projects

- set up co-operations during COST events
- report on project proposals to action chair and WG leaders
- reminder to submit member info and info on running projects

# Joint Projects

- Research for SMEs
- Research for SME Associations
- CORNET
- Eureka/Eurostars
- ERA-Net SIINN
- ERA-Net Plus Forestry call autumn 2012
- WoodWisdom Call 2013?
- FP7 KBBE July 2012 – Nov 2012?
- FP7 NMP July 2012 – Nov 2012?

# Joint Publications

- of work done in STSMs
- of work done in joint projects
  
- report on these publications during the COST action to action chair and WG leaders





**Dr. Gerhard Grüll**  
g.gruell@holzforschung.at  
Tel. +43-1-798 26 23-61

**www.holzforschung.at**

---

